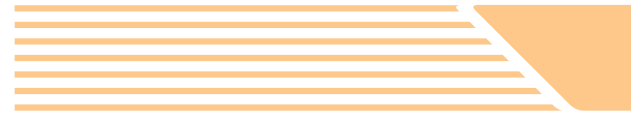




Outdoor Cabinets



Protection against all weather conditions



- capability
- flexibility
- reliability

Product Catalog

outTEG Outdoor Cabinets

Don't compromise. You can benefit from the advantages offered by the new specialized outTEG line. With a compact design, clear line and climate control system, outTEG satisfies the requirements of customers based in high temperature locations as well as those situated in regions with extremely low temperatures. The 25 mm cabinet frame perforations along with internal accessories allow a high variability of cabinets.

Is a fast delivery time important for you? Order cabinets from our standard range and avoid long lead times. If you don't choose from our basic series, you can design your own outdoor cabinet according to specific requirements. Using the web configurator, or via contact with our experienced sales representatives, who will gladly help you.

Standard offer

Based on experience, we selected a serie outTEG II Double – a double-walled design with natural ventilation between the walls. Ventilation is made possible by perforations in the lower and upper edges of the cover parts.

- Short lead time
- Selection of 12 of the bestselling sizes
- Variants of side panels (plain or with filter fan and outlet grid)
- Suitable for projects where the installed elements do not possess high heat dissipation and require strict climate comfort
- on-line configurator at www.conteg.cz/configurators

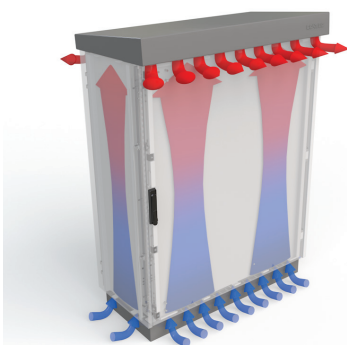
Customized solution

We can prepare special enclosure dimensions based on your individual requirements.

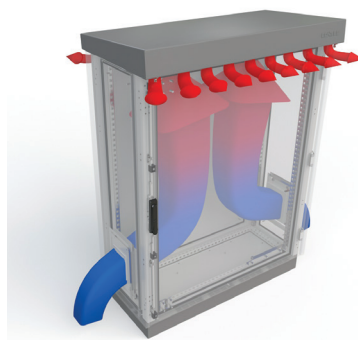
We offer two series of outdoor cabinets: outTEG II Double, our double-walled design cabinets, or outTEG I Single – our single-walled design

- Complete solution based on your requirements
- Fully mounted cabinet
- Cabinets are ready for air conditioner assembly
- Suitable for installation in extreme weather conditions
- Minimum order quantity is 5pcs
- Use on-line configurator at www.conteg.cz/configurators or contact our experienced sales representatives

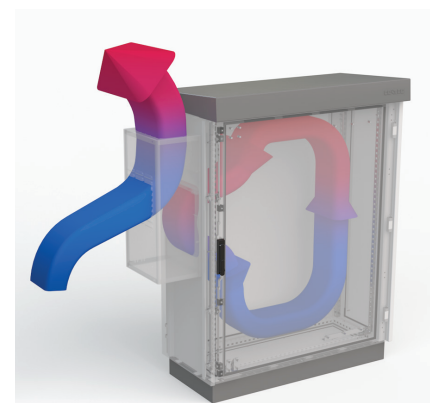
Natural vented solution



Forced ventilation fan solution

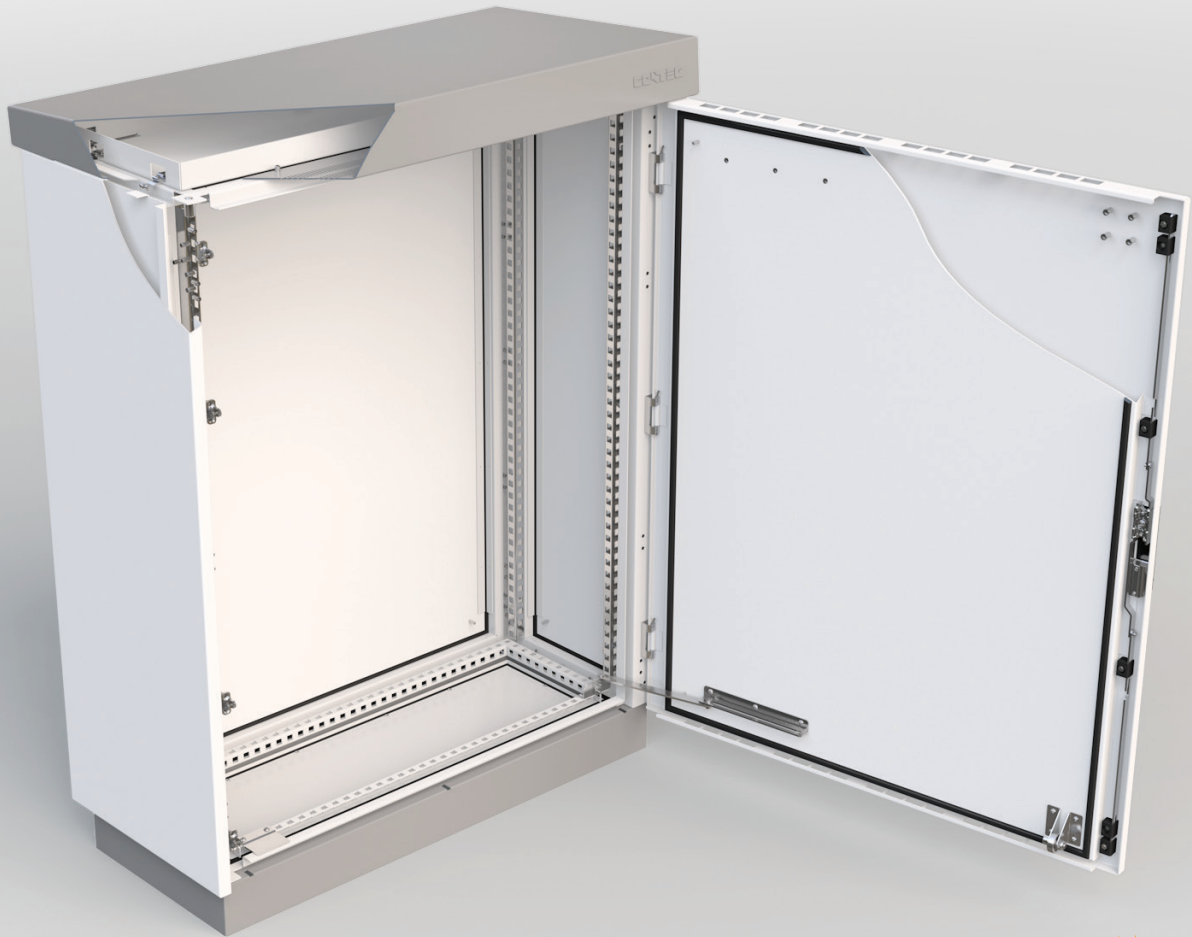


Cooling unit



Online configurator at www.conteg.com/configurators

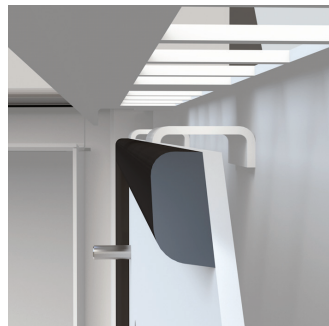
MAIN ADVANTAGES



- Simple, useful, functional construction
- The highest protection against corrosion
- Welded stainless steel enclosure frame with 25 mm perforation (2 mm material thickness)
- All removable parts are made of aluminum (doors, rear/side panels, roof)
- Polyester Powder coat with UV protection
- PUR non-porous gasket – suitable for extreme temperature ranges
- IP65 dust and water protection
- IK10 mechanical protection – against severe damage
- Vandal-proof
- Compact design
- Ready for crane transport
- High stability up to earthquake capacity (according to Bellcore)



Frame construction - 2 mm thick welded stainless steel with perforation



PUR non-porous gasket – operation temperature – 40 to + 60 °C

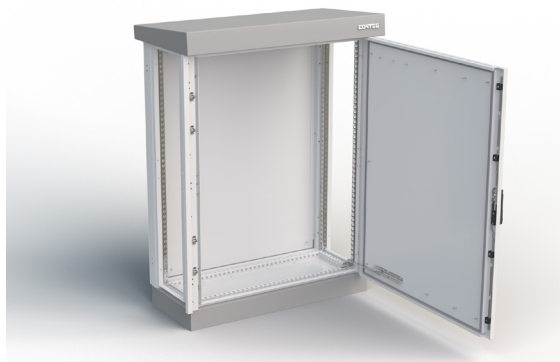


Mounting covers with clips that ensure maximum pressure on the seal



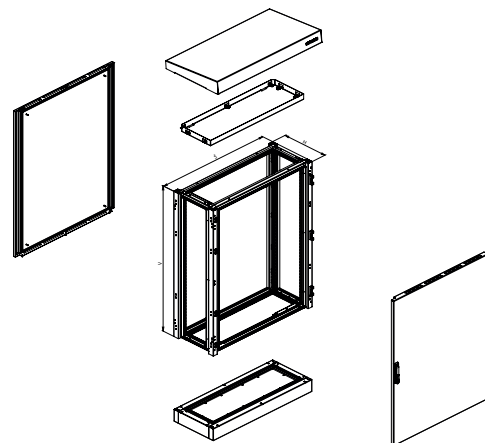
Vandal proof – side panels, rear panel and roof are screwed from the inside. The front door has hidden hinges and a metal handle

outTEG II Double Natural



Supply includes:

- Double-walled outdoor cabinet, fully mounted
- Ventilation - natural air flow on front door, rear panel and roof
- Removable rear panels
- Removable roof with natural ventilation
- Front door with multi-point locking system, key combination 333, door stop. Easily configured to a right or left hand door mounting
- 100 mm plinth
- Vertical mounting rails with 25 mm perforations
- Gland plate
- Eye-bolts
- Side panels (see page 5)



Specifications:

- Material: Cabinet body, door, roof - 2 mm AlMg3
- Material: Frame, plinth - 2 mm stainless steel
- Cabinet body color - RAL 7035 (light grey, with UV protection for outdoor use)
- Roof and plinth color - RAL 7046 (dark grey, with UV protection for outdoor use)
- IP65 according to EN 60529*

* Degree of IP rating can be reduced after mounting some accessories

Information about Seismic approvals according to Bellcore (GR-63-CORE zone 4) and EN 61587-2 by request.

outTEG double-walled, single door, height 600 and 1200 mm								
Height in U	Package	12 U	16 U	16 U	21 U	21 U	25 U	25 U
Height in mm		600	800	800	1000	1000	1200	1200
Width in mm		650	650	800	650	800	800	1000
Depth in mm		600	600	400	600	500	800	700
Order code	1 pc	OMR-DN-066506-R	OMR-DN-086506-R	OMR-DN-080804-R	OMR-DN-106506-R	OMR-DN-100805-R	OMR-DN-120808-R	OMR-DN-121007-R
Accessories								
Side panels	1 set	OMR-DN-S0606	OMR-DN-S0806	OMR-DN-S0804	OMR-DN-S1006	OMR-DN-S1005	OMR-DN-S1208	OMR-DN-S1207
Mounting plate, full installation	1 pc	IDO-MM-F665	IDO-MM-F865	IDO-MM-F88	IDO-MM-F1065	IDO-MM-F108	IDO-MM-F128	IDO-MM-F1210
19" and 21" vertical rails	1 set	IDO-MR-V6	IDO-MR-V8	IDO-MR-V8	IDO-MR-V10	IDO-MR-V10	IDO-MR-V12	IDO-MR-V12
ETSI vertical rails	1 set	IDO-MR-E6	IDO-MR-E8	IDO-MR-E8	IDO-MR-E10	IDO-MR-E10	IDO-MR-E12	IDO-MR-E12
N profile for vertical rails	1 set	IDO-MR-N6	IDO-MR-N6	IDO-MR-N4*	IDO-MR-N6	IDO-MR-N5*	IDO-MR-N8*	-
L profile for vertical rails	1 set	-	-	IDO-MR-L4	-	IDO-MR-L5	IDO-MR-L8	IDO-MR-L7
Horizontal rail	1 set	viz str. 7						
Baying kit	1 set	OMR-DN-K0606	OMR-DN-K0806	OMR-DN-K0804	OMR-DN-K1006	OMR-DN-K1005	OMR-DN-K1208	OMR-DN-K1207
Fixing frame for concrete base	1 pc	IDO-MF-P6506	IDO-MF-P6506	IDO-MF-P0804	IDO-MF-P6506	IDO-MF-P0805	IDO-MF-P0808	IDO-MF-P1007

outTEG double-walled, single door, height 1400 and 1600 mm						
Height in U	Package	30 U	34 U	34 U	34 U	34 U
Height in mm		1400	1600	1600	1600	1600
Width in mm		650	650	800	800	1000
Depth in mm		600	400	700	1000	800
Order code	1 pc	OMR-DN-146506-R	OMR-DN-166504-R	OMR-DN-160807-R	OMR-DN-160810-R	OMR-DN-161008-R
Accessories						
Side panels	1 set	OMR-DN-S1406	OMR-DN-S1604	OMR-DN-S1607	OMR-DN-S1610	OMR-DN-S1608
Mounting plate, full installation	1 pc	IDO-MM-F1465	IDO-MM-F1665	IDO-MM-F168	IDO-MM-F168	IDO-MM-F1610
19" and 21" vertical rails	1 set	IDO-MR-V14	IDO-MR-V116	IDO-MR-V16	IDO-MR-V16	IDO-MR-V16
ETSI vertical rails	1 set	IDO-MR-E14	IDO-MR-E16	IDO-MR-E16	IDO-MR-E16	IDO-MR-E16
N profile for vertical rails	1 set	IDO-MR-N6	IDO-MR-N4	IDO-MR-N7*	IDO-MR-N10*	-
L profile for vertical rails	1 set	-	IDO-MR-L4	IDO-MR-L7	IDO-MR-L10	IDO-MR-L8
Horizontal rail	1 set	viz str. 7				
Baying kit	1 set	OMR-DN-K1406	OMR-DN-K1604	OMR-DN-K1607	OMR-DN-K1610	OMR-DN-K1608
Fixing frame for concrete base	1 pc	IDO-MF-P6506	IDO-MF-P6504	IDO-MF-P0807	IDO-MF-P0810	IDO-MF-P1008

*) For 800 mm width cabinets with ID-MR-Nxx, an IDO-MR-NB holder (2 sets for 1 set of DO-MR-Nxx) must be ordered as well

SIDE PANELS



Supply includes:

- Assembly parts
- Variants of OMR-DV side panels (inclusive of filter fan and outlet grid) and OMR-DCx (inclusive of cooling unit)

Specifications:

- Double-walled construction
- Material: 2 mm AlMg3
- Application: assembled with OMR-DN-xxxxxx-R cabinet
- Color: RAL 7035 (light grey, with UV protection for outdoor use)

Cabinet dimensions HxD mm	Package	Plain side panels	Side panels with filter fan (180m³/h) and outlet grid	Side panels with outlet grids (for 540m³/h roof ventilation)	Side panels with cut-outs for cooling unit (externally -mounted) *	Side panels with cut-outs for cooling unit (internally -mounted) *
600x600	1 set	OMR-DN-S0606	OMR-DV-S0606	-	OMR-DCE-S0606-xxx	OMR-DCI-S0606-xxx
800x400	1 set	OMR-DN-S0804	OMR-DV-S0804	-	OMR-DCE-S0804-xxx	OMR-DCI-S0804-xxx
800x600	1 set	OMR-DN-S0806	OMR-DV-S0806	-	OMR-DCE-S0806-xxx	OMR-DCI-S0806-xxx
1000x500	1 set	OMR-DN-S1005	OMR-DV-S1005	OMR-DV-S1005-54	OMR-DCE-S1005-xxx	OMR-DCI-S1005-xxx
1000x600	1 set	OMR-DN-S1006	OMR-DV-S1006	-	OMR-DCE-S1006-xxx	OMR-DCI-S1006-xxx
1200x700	1 set	OMR-DN-S1207	OMR-DV-S1207	OMR-DV-S1207-54	OMR-DCE-S1207-xxx	OMR-DCI-S1207-xxx
1200x800	1 set	OMR-DN-S1208	OMR-DV-S1208	OMR-DV-S1208-54	OMR-DCE-S1208-xxx	OMR-DCI-S1208-xxx
1400x600	1 set	OMR-DN-S1406	OMR-DV-S1406	OMR-DV-S1406-54	OMR-DCE-S1406-xxx	OMR-DCI-S1406-xxx
1600x400	1 set	OMR-DN-S1604	OMR-DV-S1604	OMR-DV-S1604-54	OMR-DCE-S1604-xxx	OMR-DCI-S1604-xxx
1600x700	1 set	OMR-DN-S1607	OMR-DV-S1607	OMR-DV-S1607-54	OMR-DCE-S1607-xxx	OMR-DCI-S1607-xxx
1600x800	1 set	OMR-DN-S1608	OMR-DV-S1608	OMR-DV-S1608-54	OMR-DCE-S1608-xxx	OMR-DCI-S1608-xxx
1600x1000	1 set	OMR-DN-S1610	OMR-DV-S1610	OMR-DV-S1610-54	OMR-DCE-S1610-xxx	OMR-DCI-S1610-xxx

Note: 1 set = 2 pcs

*) Use the web configurator or contact our experienced sales representatives

DOORS



Supply includes:

- Assembly parts
- Variants of OMR-DV side panels (inclusive of filter fan and outlet grid) and OMR-DCx (inclusive of cooling unit)

Specifications:

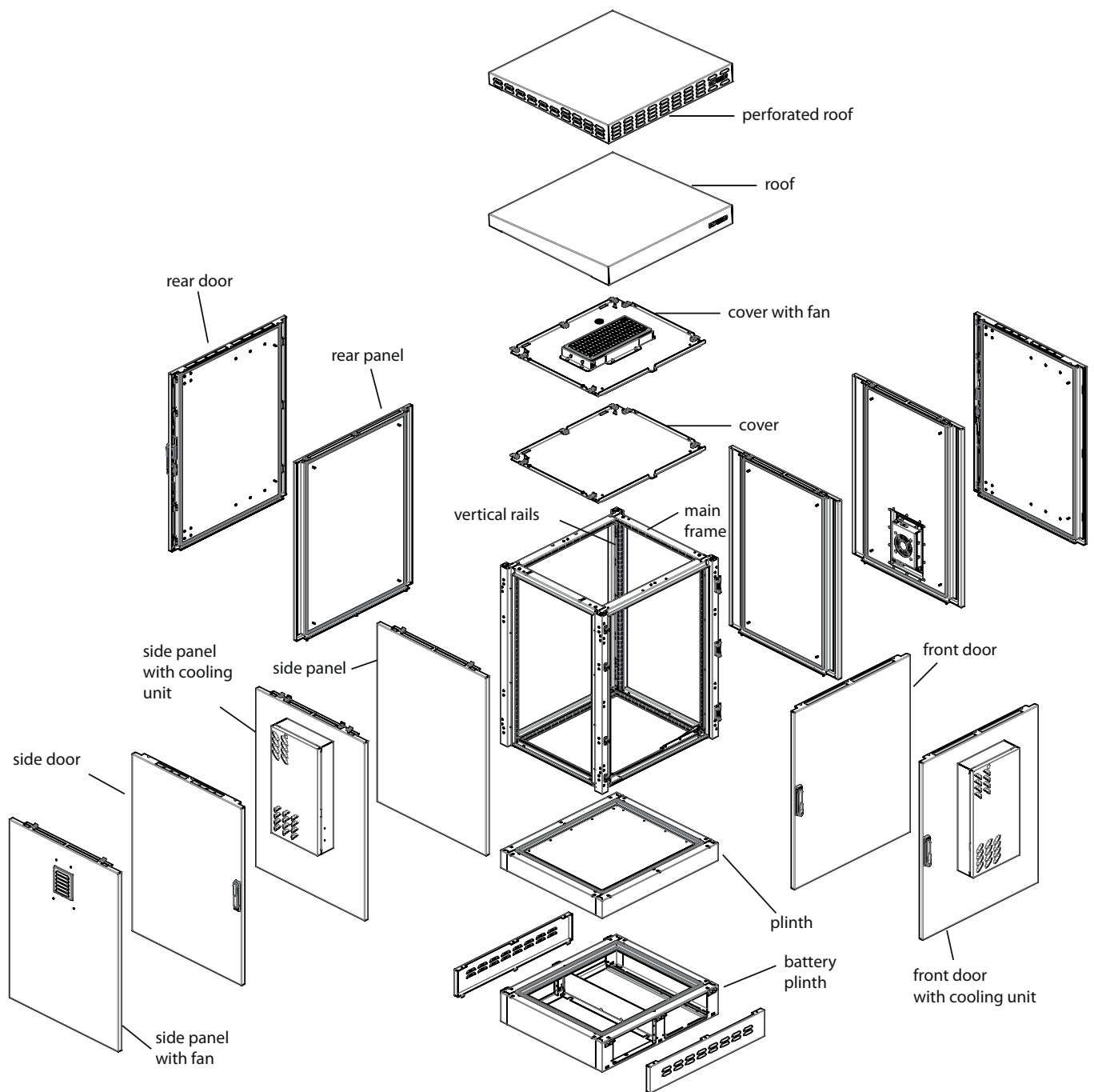
- Double-walled construction
- Material: 2 mm AlMg3
- Application: assembled with OMR-DN-xxxxxx-R cabinet
- Color: RAL 7035 (light grey, with UV protection for outdoor use)

Dimensions HxW	Package	Doors with cut-outs for cooling unit (externally -mounted) *	Doors with cut-outs for cooling unit (internally -mounted) *
600x650	1 set	OMR-DCE-D0665-xxx	OMR-DCI-D0665-xxx
800x400	1 set	OMR-DCE-D0804-xxx	OMR-DCI-D0804-xxx
800x650	1 set	OMR-DCE-D0865-xxx	OMR-DCI-D0865-xxx
1000x500	1 set	OMR-DCE-D1005-xxx	OMR-DCI-D1005-xxx
1000x650	1 set	OMR-DCE-D1065-xxx	OMR-DCI-D1065-xxx
1200x700	1 set	OMR-DCE-D1207-xxx	OMR-DCI-D1207-xxx
1200x800	1 set	OMR-DCE-D1208-xxx	OMR-DCI-D1208-xxx
1400x650	1 set	OMR-DCE-D1465-xxx	OMR-DCI-D1465-xxx
1600x400	1 set	OMR-DCE-D1604-xxx	OMR-DCI-D1604-xxx
1600x700	1 set	OMR-DCE-D1607-xxx	OMR-DCI-D1607-xxx
1600x800	1 set	OMR-DCE-D1608-xxx	OMR-DCI-D1608-xxx
1600x1000	1 set	OMR-DCE-D1610-xxx	OMR-DCI-D1610-xxx

Note: 1 set = 2 pcs

*) Use the web configurator or contact our experienced sales representatives

Customized Solutions for outTEG I and outTEG II

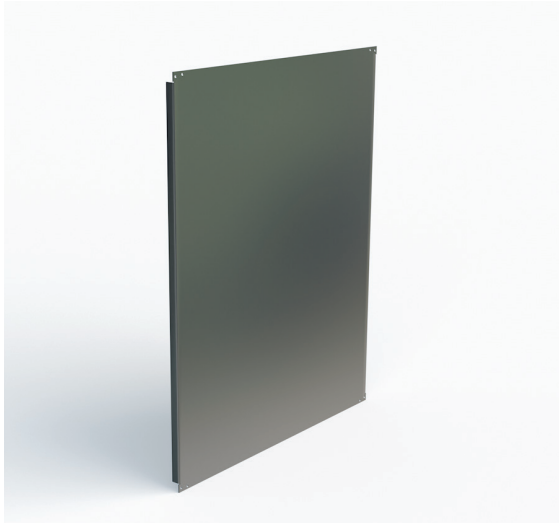


We can prepare special cabinet sizes based on your individual requirements. We offer 2 types of outdoor cabinets: outTEG II Double – a double-walled design, or outTEG I Single – a single-walled design. Minimum order quantity is 5 pcs. Both types of outdoor cabinets can be fitted with elements for controlling the internal climate - heating units, EC fans with aluminum body, thermoelectric units and outdoor air conditioning units, (see page 7).

For customized solutions or assistance, please contact our sales or technical teams via phone or email: outdoor@conteg.com, and a special offer for outTEG meeting your requirements, will be prepared for you.

Interior Installation

MOUNTING PLATE, FULL-SIZE



Supply includes:

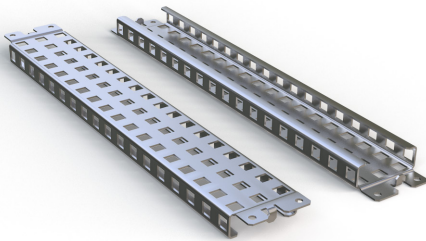
- Assembly parts

Specifications:

- Material: 3 mm galvanized sheet steel

For size of the cabinet H x W in mm	Order code
600x650	IDO-MM-F665
800x650	IDO-MM-F865
800x800	IDO-MM-F88
1000x650	IDO-MM-F1065
1000x800	IDO-MM-F108
1200x800	IDO-MM-F128
1200x1000	IDO-MM-F1210
1400x650	IDO-MM-F1465
1600x650	IDO-MM-F1665
1600x800	IDO-MM-F168
1600x1000	IDO-MM-F1610

HORIZONTAL AND VERTICAL RAILS



For cabinet depth mm	Package	Order code
400	1 set	IDO-MR-H4
500	1 set	IDO-MR-H5
600	1 set	IDO-MR-H6
700	1 set	IDO-MR-H7
800	1 set	IDO-MR-H8
1000	1 set	IDO-MR-H10

Note: 1 set = 2 pcs

Supply includes:

- Assembly parts

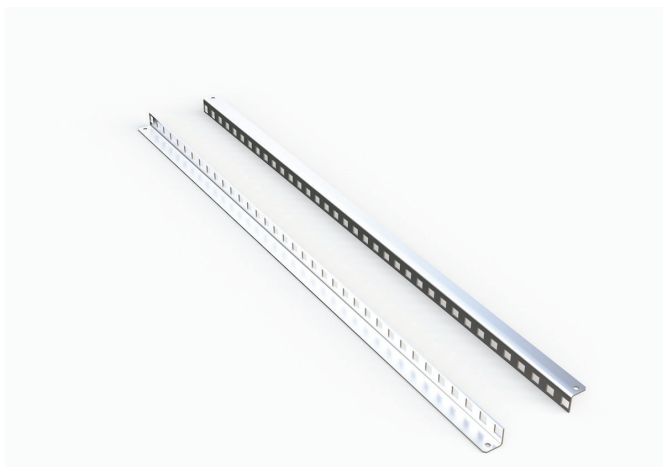
Specifications:

- Material: 2 mm galvanized sheet steel
- Application: for additional mounting positions
- Installation: on the frame profile

For cabinet height mm	Package	Order code
600 (12U)	1 set	IDO-MR-HH6
700 (14U)	1 set	IDO-MR-HH7
800 (16U)	1 set	IDO-MR-HH8
1000 (21)	1 set	IDO-MR-HH10
1200 (25U)	1 set	IDO-MR-HH12
1400 (30U)	1 set	IDO-MR-HH14
1600 (34U)	1 set	IDO-MR-HH16

For cabinet width v mm	Package	Order code
650	1 set	IDO-MR-HW65
800	1 set	IDO-MR-HW8
1000	1 set	IDO-MR-HW10

19", 21" AND ETSI VERTICAL RAILS



Supply includes:

- Assembly parts

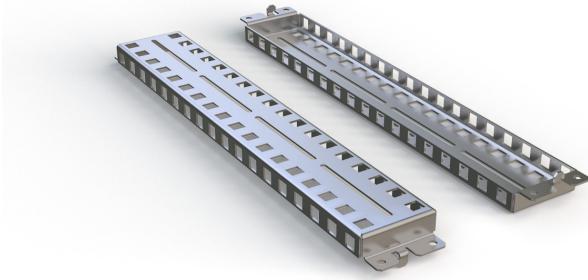
Specifications:

- Material: 2 mm galvanized sheet steel
- Application: in combination with N or L profiles
- Installation: on IDO-MR-Nxx / IDO-MR-Lxx rails

For cabinet height mm (v U)	Package	Order code (19", 21")	Order code (ETSI)
600 (12U)	1 set	IDO-MR-V6	IDO-MR-E6
700 (14U)	1 set	IDO-MR-V7	IDO-MR-E7
800 (16U)	1 set	IDO-MR-V8	IDO-MR-E8
1000 (21U)	1 set	IDO-MR-V10	IDO-MR-E10
1200 (25U)	1 set	IDO-MR-V12	IDO-MR-E12
1400 (30U)	1 set	IDO-MR-V14	IDO-MR-E14
1600 (34U)	1 set	IDO-MR-V16	IDO-MR-E16

Note: 1 set = 2 pcs

N PROFILE FOR VERTICAL RAILS



Supply includes:

- Assembly parts

Specifications:

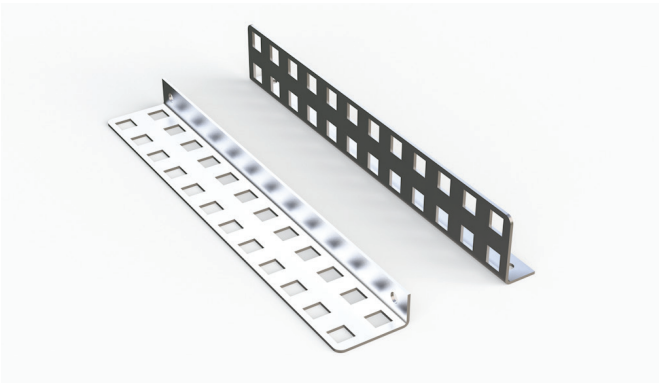
- Material: 2 mm galvanized sheet steel
- Application: for 650 and 800° mm cabinet widths
- Installation: on the frame profile

For cabinet depth mm	Package	Order code
400	1 set	IDO-MR-N4
500	1 set	IDO-MR-N5
600	1 set	IDO-MR-N6
700	1 set	IDO-MR-N7
800	1 set	IDO-MR-N8
1000	1 set	IDO-MR-N10

Note: 1 set = 2 pcs

* For 800 mm width cabinets with ID-MR-Nxx, an IDO-MR-NB holder (2 sets for 1 set of DO-MR-Nxx) must be ordered as well

L PROFILE FOR VERTICAL RAILS



Supply includes:

- Assembly parts

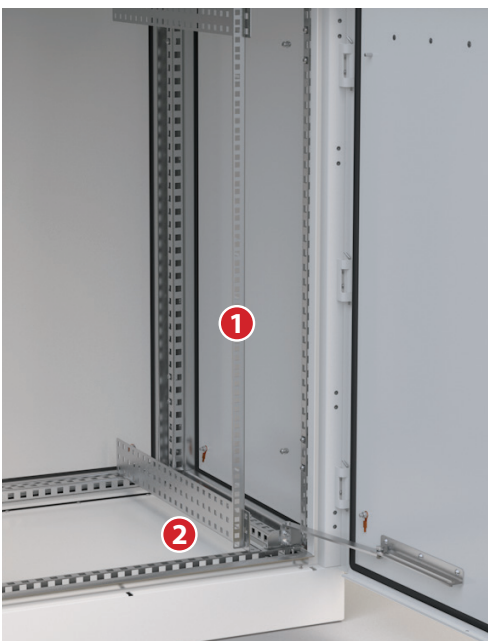
Specifications:

- Material: 2 mm galvanized sheet steel
- Application: for 800 and 1000 mm cabinet widths
- Installation: on the frame profile

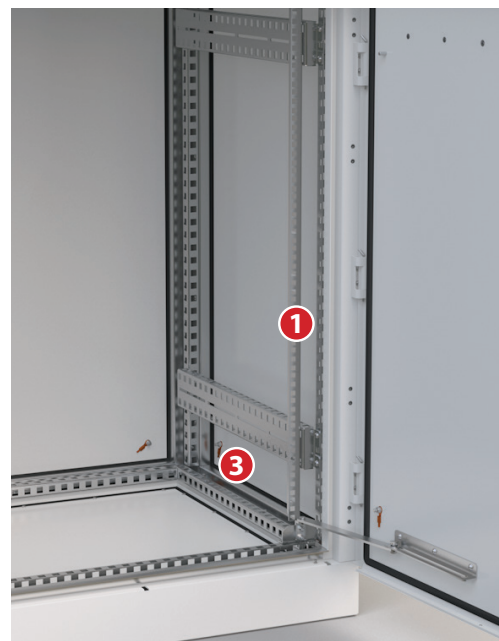
For cabinet depth mm	Package	Order code
400	1 set	IDO-MR-L4
500	1 set	IDO-MR-L5
600	1 set	IDO-MR-L6
700	1 set	IDO-MR-L7
800	1 set	IDO-MR-L8
1000	1 set	IDO-MR-L10

Note: 1 set = 4 pcs

Mounting options for vertical rails



A combination of vertical rails **1** IDO-MR-Vxx and L profile **2** IDO-MR-Lxx



A combination of vertical rails **1** IDO-MR-Vxx and N profile **3** IDO-MR-Nxx

BAYING KIT



Supply includes:

- Assembly parts

Specifications:

- Double-walled construction
- Material: 2 mm AlMg3
- Application: assembled with OMR-DN-xxxxxx-R cabinets
- Color: RAL 7035 (light grey, with UV protection for outdoor use)

For cabinet HxD mm	Package	Order code
600x600	1 set	OMR-DN-K0606
800x400	1 set	OMR-DN-K0804
800x600	1 set	OMR-DN-K0806
1000x500	1 set	OMR-DN-K1005
1000x600	1 set	OMR-DN-K1006
1200x700	1 set	OMR-DN-K1207
1200x800	1 set	OMR-DN-K1208
1400x600	1 set	OMR-DN-K1406
1600x400	1 set	OMR-DN-K1604
1600x700	1 set	OMR-DN-K1607
1600x800	1 set	OMR-DN-K1608
1600x1000	1 set	OMR-DN-K1610

FIXING FRAME FOR CAST CONCRETE BASE

A welded frame designed for embedding into the concrete plinth. Correct positioning of the cabinet on concrete base aligned with the position of the screws on the fuser frame and holes in the bottom of the base cabinet. Cabinet is secured by bolts and nuts from inside the plinth after removing the cable gland.

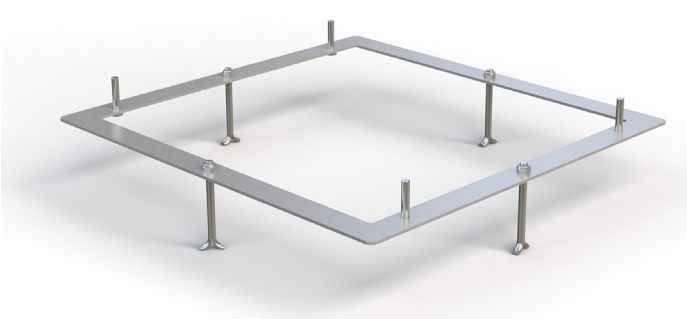
Supply includes:

- Assembly parts

Specifications:

- Welded frame with anchors and screws
- Material: 4 mm galvanized sheet steel
- Application: assembled with both series of outTEG cabinets

For cabinet WxD	Package	Order code
650x400	1 set	IDO-MF-P6504
650x600	1 set	IDO-MF-P6506
800x400	1 set	IDO-MF-P0804
800x500	1 set	IDO-MF-P0805
800x700	1 set	IDO-MF-P0807
800x800	1 set	IDO-MF-P0808
800x1000	1 set	IDO-MF-P0810
1000x700	1 set	IDO-MF-P1007
1000x800	1 set	IDO-MF-P1008



CLIMATE CONTROL SOLUTION

Outdoor cooling units



Supply includes:

- Unit ready for connection

Specifications:

- Housing material: steel sheet/stainless steel/aluminum powder coated
- Color: RAL 7035 (light grey)
- Refrigerant: R134a
- Protection degree:
- Cabinet air circuit: IP54
- Ambient air circuit: IP24
- Mounting:
 - External mounting
 - Internal mounting
- Certification: UL, CUL, CE

Note: Comes with outTEG outdoor enclosures, with a cut-out as specified on the side panel or door.



Internal mounting position



External mounting position

Outdoor Air-conditioning units - wall-mounted, 380 - 750 W									
Order code		AC-WMO-04-400J	AC-WMO-04-420J	AC-WMO-05-400C	AC-WMO-05-420C	AC-WMO-05-700C	AC-WMO-05-720C	AC-WMO-06-4A0I	AC-WMO-07-400E
Material		sheet steel	stainless steel	sheet steel	stainless steel	sheet steel	stainless steel	aluminium	sheet steel
Dimensions mm	H	600		830		830		628	600
	W	320		315		315		468	340
	D	110		270		270		159	250
Minimum cabinet dimensions (doors or side)	H x W, H x D	800 x 600 mm		1000 x 500 mm		1000 x 500 mm		1000 x 700 mm	800 x 600 mm
Voltage/Frequency		230 V; 50/60 Hz ~N		230 V; 50/60 Hz ~N		120 V; 60 Hz ~N 400 V; 50/60 Hz ~N 460 V; 50/60 Hz ~N		230 V; 50/60 Hz ~N	230 V; 50/60 Hz ~N
Cooling capacity to DIN 3168	L35 L35	380 W		550 W		550 W		650 W	750 W
	L35L50	100 W		490 W		490 W		425W	450W
Rated power consumption	L35 L35	505 W	490 W	370 W	440 W; 120 V 410 W; 400/460 V - 50 Hz 410 W; 400/460 V - 60 Hz		590 W	610 W	
Max. air volume flow	Ambient air circuit	250 m ³ /h		330 m ³ /h		330 m ³ /h		330 m ³ /h	330 m ³ /h
	Cabinet air circuit	125 m ³ /h		150 m ³ /h		150 m ³ /h		200 m ³ /h	200 m ³ /h
Rated current	L35L35	2,6 A	2,5 A	2,2 A	5,3 A; 120 V - 60 Hz 1,6 A; 400 V - 50/60 Hz 1,4 A; 460 V - 50/60 Hz		2,7 A	2,6 A	
Starting current		5,8 A		9,8 A	19,1 A; 120 V 4,3 A; 400 V 4,3 A; 460 V		6,5 A	5,8 A	
Pre-Fuse T		6 A		6 A	10 A; 120 V 2 x 3,6 A; 400/460 V - 50/60 Hz		5 A	6 A	
Operating temperature range		+20 °C/+50 °C		+5°C/+55°C *		+5°C/+55°C *		-20°C/+55°C	-20°C/+55 °C
Temperature range setting min/max		20°C/+50°C		20°C/+50°C		20°C/+50°C		20°C/+55°C	20°C/+55 °C
Mounting	External	yes		yes		yes		no	yes
	Internal	yes		no		no		yes	no
Weight		16 kg		30 kg		37 kg		19,5 kg	24 kg
Compressor		rotary		reciprocating/piston		reciprocating/piston		rotary	rotary
Connection		connection terminals		connection terminals		connection terminals		connection terminals	connection terminals

* with additional heater: - 20°C up to +55°

Outdoor Air-conditioning units - wall-mounted, 750 - 850 W

Order code	AC-WMO-08-400C	AC-WMO-08-420C	AC-WMO-08-700C	AC-WMO-08-720C	AC-WMO-08-4A0I	AC-WMO-08-400E	AC-WMO-09-4A0I
Material	sheet steel	stainless steel	sheet steel	stainless steel	aluminium	sheet steel	aluminium
Dimensions mm	H	830	830	1025	1066	890	
	W	315	315	466,5	500	385	
	D	270	270	160	180	160	
Minimum cabinet dimensions (doors or side)	H x W, H x D	1000 x 500 mm	1000 x 500 mm	1200 x 700 mm	1200 x 700 mm	1200 x 600 mm	
Voltage/Frequency	230 V; 50/60 Hz ~N	230 V; 50/60 Hz ~N	120 V; 60 Hz ~N 400 V; 50/60 Hz ~N 460 V; 50/60 Hz ~N	230 V; 50/60 Hz ~N	230 V; 50/60 Hz ~N	230 V; 50/60 Hz ~N	
Cooling capacity to DIN 3168	L35 L35	750 W	750/780 W	750 W	750 W	800 W	800 W
	L35L50	530 W	530 W	480W	460W	850 W	750W
Rated power consumption	L35 L35	450 W	410/490 W	550 W; 120 V 460 W; 400/460 V - 50 Hz 460 W; 400/460 V - 60 Hz	550 W	630 W	500 W
Max. air volume flow	Ambient air circuit	330 m³/h	330 m³/h	480 m³/h	480 m³/h	480 m³/h	
	Cabinet air circuit	200 m³/h	200 m³/h	360 m³/h	360 m³/h	360 m³/h	
Rated current	L35L35	2,3 A	2,3/2,5 A	7,1 A; 120 V - 60 Hz 2 A; 400 V - 50/60 Hz 1,8 A; 460 V - 50 Hz 1,8 A; 460 V - 60 Hz	2,4 A	2,7 A	2,6 A
Starting current		10,1 A	10,1 A	20,5 A; 120 V 4,5 A; 400 V 4,5 A; 460 V	11,5 A	6,5 A	6,5 A
Pre-Fuse T		6 A	6 A	10 A; 120 V 2 x 3,6 A; 400/460 V - 50/60 Hz	10 A	5 A	6,3 A
Operating temperature range		+5°C/+55°C *	+5°C/+55°C *	-33°C/+50 °C	-40°C/+55 °C	-10°C/+50 °C	
Temperature range setting min/max		20°C/+50°C	20°C/+50°C	20°C/+50 °C	20°C/+55 °C	20°C/+50 °C	
Mounting	External	yes	yes	no	yes	no	
	Internal	no	no	yes	no	yes	
Weight		31 kg	27,7 kg	38 kg	33,7 kg	32 kg	40 kg
Compressor		reciprocating/piston	reciprocating/piston	reciprocating/piston	reciprocating/piston	rotary	rotary
Connection		connection terminals	connection terminals	connection terminals	connection terminals	connection terminals	connection terminals

* with additional heater: - 20°C up to +55°

Outdoor Air-conditioning units - wall-mounted, 850 - 1000 W

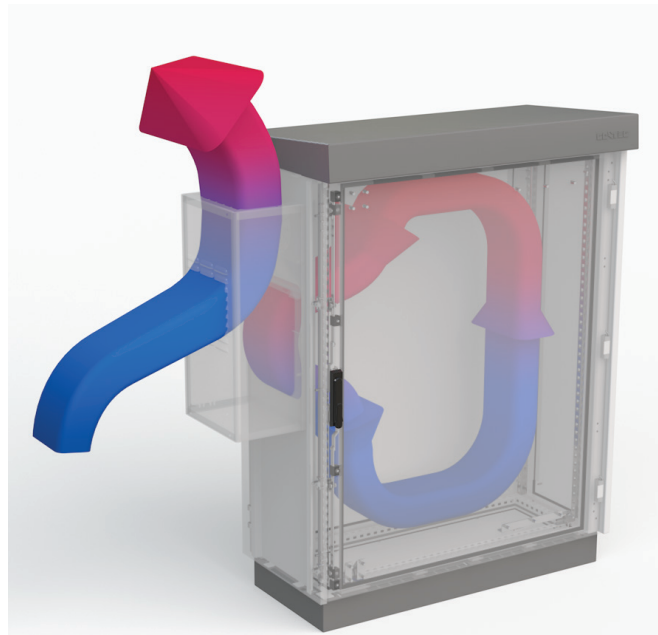
Order code	AC-WMO-09-400C	AC-WMO-09-420C	AC-WMO-09-700C	AC-WMO-09-720C	AC-WMO-10-400C	AC-WMO-10-420C	AC-WMO-10-700C	AC-WMO-10-720C
Material	sheet steel	stainless steel	sheet steel	stainless steel	sheet steel	stainless steel	sheet steel	stainless steel
Dimensions mm	H	830	830	900	900	900	900	
	W	315	315	315	315	315	315	
	D	270	270	270	270	270	270	
Minimum cabinet dimensions (doors or side)	H x W, H x D	1000 x 500 mm	1000 x 500 mm	1000 x 500 mm	1000 x 500 mm	1000 x 500 mm	1000 x 500 mm	
Voltage/Frequency	230 V; 50/60 Hz ~N	230 V; 50/60 Hz ~N	120 V; 60 Hz ~N 400 V; 50/60 Hz ~N 460 V; 50/60 Hz ~N	230 V; 50/60 Hz ~N	120 V; 60 Hz ~N 400 V; 50/60 Hz ~N 460 V; 50/60 Hz ~N			
Cooling capacity to DIN 3168	L35 L35	850 W	850 W	1000 W	1000 W			
	L35L50	625 W	625 W	700 W	700 W			
Rated power consumption	L35 L35	500 W	700 W; 120 V 600 W; 400/460 V - 50 Hz 700 W; 400/460 V - 60 Hz	610 W	720 W; 120 V 610 W; 400/460 V - 50 Hz 705 W; 400/460 V - 60 Hz			
Max. air volume flow	Ambient air circuit	370 m³/h	370 m³/h	370 m³/h	370 m³/h			
	Cabinet air circuit	200 m³/h	200 m³/h	300 m³/h	300 m³/h			
Rated current	L35L35	3,2 A	7,3 A; 120 V - 60 Hz 2,6 A; 400 V - 50/60 Hz 2,2 A; 460 V - 50/60 Hz	3,6 A	8,1 A; 120 V - 60 Hz 2,8 A; 400 V - 50/60 Hz 2,3 A; 460 V - 50/60 Hz			
Starting current		15,9 A	30,2 A; 120 V 5,1 A; 400 V 5,1 A; 460 V	16,4 A	30,7 A; 120 V 5,3 A; 400 V 5,3 A; 460 V			
Pre-Fuse T		10 A	16 A; 120 V 2 x 3,6 A; 400/460 V - 50/60 Hz	10 A	16 A; 120 V 2 x 3,6 A; 400/460 V - 50/60 Hz			
Operating temperature range		+5°C/+55°C *	+5°C/+55°C *	+5°C/+55°C *	+5°C/+55°C *			
Temperature range setting min/max		20°C/+50°C	20°C/+50°C	20°C/+50 °C	20°C/+50 °C			
Mounting	External	yes	yes	yes	yes			
	Internal	no	no	no	no			
Weight		32 kg	39 kg	34 kg	41 kg			
Compressor		reciprocating/piston	reciprocating/piston	reciprocating/piston	reciprocating/piston			
Connection		connection terminals	connection terminals	connection terminals	connection terminals			

* with additional heater: - 20°C up to +55°

Outdoor Air-conditioning units - wall-mounted, 1230 - 2635 W

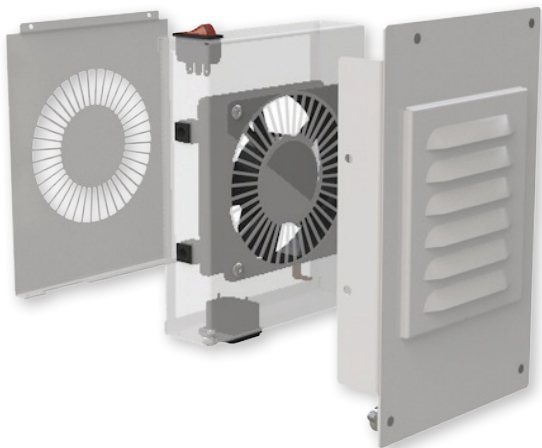
		AC-WMO-12-400E	AC-WMO-15-4A0I	AC-WMO-15-400C	AC-WMO-15-420C	AC-WMO-15-700C	AC-WMO-15-720C	AC-WMO-16-400E	AC-WMO-26-400E
Material		sheet steel	aluminium	sheet steel	stainless steel	sheet steel	stainless steel	sheet steel	sheet steel
Dimensions mm	H	1066	1025	1150		1150		1066	1320
	W	500	466,5	395		395		500	500
	D	180	160	270		270		180	180
Minimum cabinet dimensions (doors or side)	H x W, H x D	1200 x 700 mm	1200 x 700 mm	1000 x 600 mm		1000 x 600 mm		1200 x 700 mm	1600 x 700 mm
Voltage/Frequency		230 V; 50/60 Hz ~N	230 V; 50/60 Hz ~N	230 V; 50/60 Hz ~N		400 V; 50/60 Hz ~N		230 V; 50/60 Hz ~N	230 V; 50/60 Hz ~N
Cooling capacity to DIN 3168	L35 L35	1230 W	1500 W	1500 W	750/780 W	1500 W	750/780 W	1600 W	2635 W
	L35L50	820W	900W	975 W		975 W		1200W	1800 W
Rated power consumption	L35 L35	1150 W	820 W	850 W		880 W; 120 V 880 W; 400/460 V - 50 Hz 1000 W; 400/460 V - 60 Hz		1675 W	1675 W
Max. air volume flow	Ambient air circuit	480 m ³ /h	480 m ³ /h	480 m ³ /h		480 m ³ /h		480 m ³ /h	480 m ³ /h
	Cabinet air circuit	360 m ³ /h	360 m ³ /h	380 m ³ /h		380 m ³ /h		360 m ³ /h	360 m ³ /h
Rated current	L35L35	5 A	4 A	5,5 A		10,1 A; 120 V - 60 Hz 3 A; 400 V - 50/60 Hz 3,1 A; 460 V - 50/60 Hz		7,5 A	8,6 A
Starting current		16 A	15,5 A	21,2 A		39,4 A; 120 V 5,5 A; 400 V 5,5 A; 460 V		26 A	30 A
Pre-Fuse T		10 A	10 A	16 A		10 A; 120 V 2 x 6 A; 400/460 V - 50/60 Hz		16 A	15 A
Operating temperature range		-40 °C/+52°C	20°C/+50°C *	+5°C/+55°C *		+5°C/+55°C *		-40 °C/+50 °C	-40 °C/+50 °C
Temperature range setting min/max		20°C/+52°C	10°C/+50°C	20°C/+50°C		20°C/+50°C		20°C/+50°C	20°C/+50°C
Mounting	External	yes	no	yes		yes		yes	yes
	Internal	no	yes	no		no		no	no
Weight		47 kg	30 kg	41 kg		49 kg		56 kg	62 kg
Compressor		rotary	rotary	reciprocating/piston		reciprocating/piston		rotary	rotary
Connection		connection terminals	connection terminals	connection terminals		connection terminals		connection terminals	connection terminals

* with additional heater: - 20°C up to +55°



Air conditioning unit

EC FILTER FANS FOR outTEG I AND outTEG II CABINETS



Side filter fan

Supply includes:

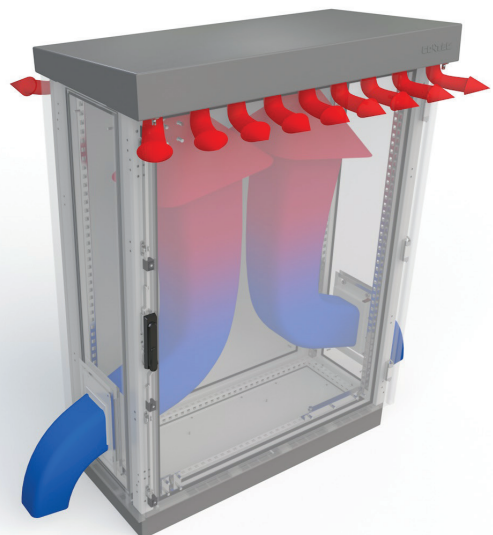
- Unit with thermostat ready for connection

Specifications:

- Color: RAL 7035 (light grey)
- IP rating: IP55
- Material: aluminium housing
- Airflow direction - reversible



Top filter fan

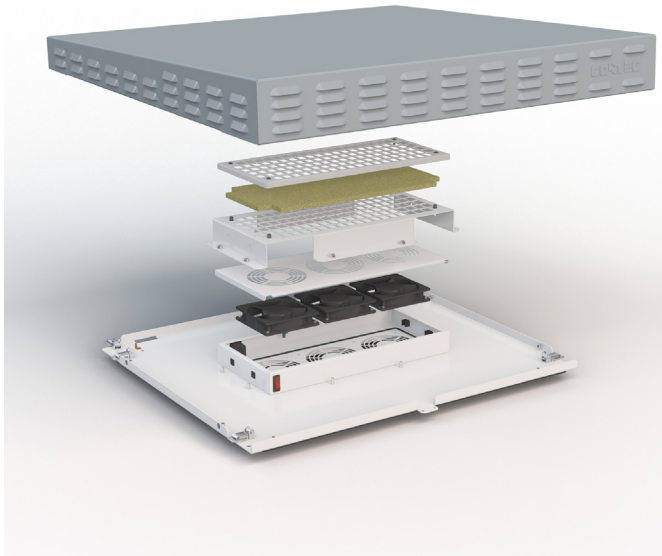


Forced ventilation

EC filter fans, air flow 180 - 540 m ³ /h for outTEG I Single			
Order code		IDO-EC-18SS-4	IDO-EC-54ST-4
Dimensions mm	H	119	56
	W	119	430
	D	38	209
Voltage/Phase/Frequency		230 V; 1ph; 50 Hz	230 V; 1ph; 50 Hz
Power absorbed/Current absorbed		4,4 W/0,034 A	13,2 W/0,11 A
Pre-Fuse T		0,5 A	1 A
Temperature limits		-20 °C/+75 °C	-20 °C/+75 °C
Noise level		42 dB (A)	47 dB (A)
Fan flow		180 m ³ /h	540 m ³ /h
Number of units		1	3
Fan installation		Side	Top
Outlet filter grid	Order code	IDO-EC-GS18	2x IDO-EC-GS18
Accessories	Package		
Spare filter mats for IP 55 side fan/grid	5 pc	IDO-EC-F5SS	IDO-EC-F5SS
Spare filter mats for IP 55 roof fan/grid	5 pc	-	IDO-EC-F5ST

EC filter fans, air flow 180 - 540 m ³ /h for outTEG II Double			
Order code		IDO-EC-18DS-4	IDO-EC-54DT-4
Dimensions mm	H	119	56
	W	119	430
	D	38	209
Voltage/Phase/Frequency		230 V; 1ph; 50 Hz	230 V; 1ph; 50 Hz
Power absorbed/Current absorbed		4,4 W/0,034 A	13,2 W/0,11 A
Pre-Fuse T		0,5 A	1 A
Temperature limits		-20 °C až +75 °C	-20 °C až +75 °C
Noise level		42 dB (A)	47 dB (A)
Fan flow		180 m ³ /h	540 m ³ /h
Number of units		1	3
Fan installation		Side	Top
Outlet filter grid	Order code	IDO-EC-GD18	2x IDO-EC-GD18
Accessories	Package		
Spare filter mats for IP 55 side fan/grid	5 pc	IDO-EC-F5SS	IDO-EC-F5SS
Spare filter mats for IP 55 roof fan/grid	5 pc	-	IDO-EC-F5ST

PERFORATED ROOF WITH TOP FILTER FAN



Supply includes:

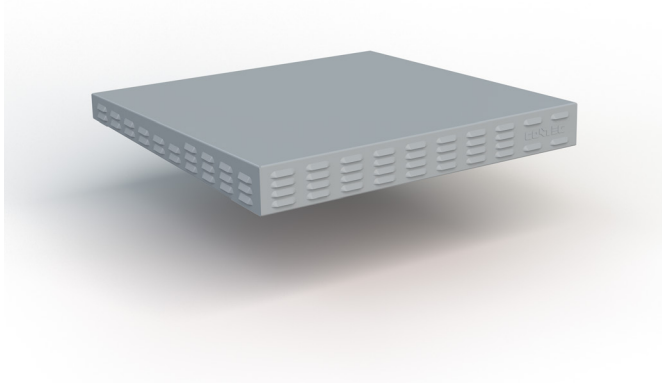
- Assembly parts
- Perforated roof, filter fan unit

Specifications:

- Material: 2 mm AlMg3
- Application: assembled with OMR-DN-xxxxxx-R cabinets
- Kit of 3 filter fans, airflow 540m³/h
- Color: RAL 7046 (dark grey, with UV protection for outdoor use)

For cabinet WxD mm	Package	Order code
650x400	1 set	OMR-DV-T6504
650x600	1 set	OMR-DV-T6506
800x500	1 set	OMR-DV-T0805
800x700	1 set	OMR-DV-T0807
800x800	1 set	OMR-DV-T0808
800x1000	1 set	OMR-DV-T0810
1000x700	1 set	OMR-DV-T1007
1000x800	1 set	OMR-DV-T1008

PERFORATED ROOF



Supply includes:

- Assembly parts

Specifications:

- Perforated roof
- Material: 2 mm AlMg3
- Application: assembled with OMR-DN-xxxxxx-R cabinets
- Color: RAL 7046 (dark grey, with UV protection for outdoor use)

For cabinet WxD mm	Package	Order code
650x400	1 set	OMR-DV-R6504
650x600	1 set	OMR-DV-R6506
800x400	1 set	OMR-DV-R0804
800x500	1 set	OMR-DV-R0805
800x700	1 set	OMR-DV-R0807
800x800	1 set	OMR-DV-R0808
800x1000	1 set	OMR-DV-R0810
1000x700	1 set	OMR-DV-R1007
1000x800	1 set	OMR-DV-R1008

Thermoelectric Cooler



Thermoelectric cooler, cooling power 200 W		
Order code	ID-EP-20-1	
Dimensions mm	H	320
	W	310
	D	188 (100 mm outside of the cabinet)
Cooling power	200 W	
Heating power	200 W	
Voltage	24 V DC	
Rated voltage range	17-27 V DC	
Rated current	9,2 A	
Max current	11,1 A	
Rated Temp. Range	-20 °C to +70 °C	
Weight	12 kg	

Supply includes:

- Thermoelectric cooling unit ready for connection

Features:

- Material: plastic parts in PC/ABS alloy. All parts self-extinguishing, according to UL 94V-0
- Color: RAL 7035 and RAL 7032
- Protection degree: IP55
- Electrical connection: by 4 pole Cage Clamp® connector
- Sealing: permanent sealing gasket in closed cell foam polyethylene

Note: The unit is assembled and supplied connected to outTEG cabinet.

Recommended accessories: Programmable thermostat and reverse starter (order code ID-EP-REG) is suitable for controlling cooling/heating depending on measured temperature.

Cabinet Resistance Heaters



Heaters without fan, thermal output 55 - 500 W						
Dimensions mm	H	116	166	216	316	303
	W	75	75	75	75	93
	D	45	45	45	45	117
Operation voltage	220-240 V AC/DC; 24 V AC/DC; 48 V AC/DC					
Thermal output	55 W	125 W	180 W	250 W	500 W	
Order code	ID-EH-5-4	ID-EH-12-4	ID-EH-18-4	ID-EH-25-4	ID-EH-50-4	

Supply includes:

- Heater ready for connection

Features:

- Material: coated aluminum profile
- Mounting: Heaters without fan: silicon cable 3 × 0,75 mm², standard length 0,5 m
- Heaters with fan: 3-pole connector
- Connection: clip on DIN rail EN 60715 or screws

Note: It is recommended to install heaters in order to prevent condensation forming in the cabinet.

Heaters with fan, thermal output 250 - 500 W			
Dimensions mm	H	185	185
	W	80	80
	D	110	110
Operation voltage	230 V AC; 115 V AC		
Thermal output	250 W	500 W	
Order code	ID-EH-25F-4	ID-EH-50F-4	

Filter fan: air flow 48 m³/h

Accessories

THERMOSTAT FOR COOLING AND HEATING



Thermostat for cooling (blue button): with normally open contact, when the temperature increases the contact closes, activating the fan to evacuate the heat.

Thermostat for heating (red button): with normally closed contact, when the temperature falls below the setpoint, the contact closes, activating the resistance heater to prevent condensation.

Thermostat for cooling	
Package	Order code
1 pc	ID-E0-TC

Thermostat for heating	
Package	Order code
1 pc	ID-E0-TH

Supply includes:

- Thermostat ready for connection

Features:

- Sensor element: thermostatic bi-metal
- Maximum tolerance: ± 4 K
- Switching difference (hysteresis) is $7^\circ\text{C} \pm 3$ K
- Switching capacity (max. load):
 - a) 15 A resistive/2 A inductive @ 120 V AC
 - b) 10 A resistive/2 A inductive @ 120 V AC
 - c) DC 30 W
- Connections: 2-pole terminal for AWG 14 max. (2,5 mm²)
- Mounting: clip for 35 mm DIN rail
- Dimensions (HxWxD): 55 x 33 x 43 mm
- Setting temperature range: 0 to + 60 °C
- Operating temperature: -20 to + 80 °C
- Weight: 40 g

HYGROSTAT



Hygrostat is a device that switches or controls the heating unit in the cabinet depending on the level of relative humidity. According to the adjusted humidity, the device provides a controlled output to the condensation prevention device inside the cabinet.

Hygrostat	
Package	Order code
1 pc	ID-E0-HY

Supply includes:

- Hygrostat ready for connection

Features:

- Installation: DIN rail 35 mm
- Connection: screw terminals
- Range of humidity control: 35 - 100 % RH
- Switching capacity (max. load): 5 A / 230 V
- Switching hysteresis: ± 3 % RH
- Dimensions (HxWxD): 67 x 50 x 38 mm

LIGHTING UNITS



Lighting units

Package	Order code
1 pc	ID-PO-L1-4

Supply includes:

- Lighting unit ready for connection

Features:

- Lighting unit, 11 W
- 19" or frame installation
- Automatic function ensured by motion sensor
- Dimensions: 345 x 91 x 40 mm
- Mounting: screw fixing, M5
- Connection: terminal 2,5 mm² with cable lamp, torque 0,8 Nm max

PRESSURE COMPENSATOR



Especially when enclosures are exposed to changing climatic conditions (e.g. with outdoor siting), condensate may form in sealed enclosures due to pressure differences. The integral sealing membrane largely prevents such pressure differences and hence condensation; additionally, it also prevents the ingress of moisture from the outside.

Pressure compensator

Package	Order code
2 pc	ID-E0-PC

Supply includes:

- 2 pcs of pressure compensator ready for connection

Features:

- Mounting: PG 29 thread with union nut
- Fitting position: vertical¹
- Torque: 5 Nm (max. 10 Nm)
- Material: plast dle UL94 V-0, light grey
- Sealing: sealing gasket NBR
- Air interface: 1,5 cm²
- Operating/storage temperature: -45 to +70 °C (-49 to +158 °F)
- Protection degree: IP55
- Dimensions: Ø 65,5 mm x 30,5 mm

¹ Protection type is restricted to IP 54 if fitting position of pressure compensator is not vertical.

CABINET MONITORING RAMOS MINI



The RAMOS (Rack MOnitoring System) is designed to be deployed in a rack to monitor its internal and external environment. RAMOS Mini – supports up to two sensors (temperature or humidity) and additionally one dry contact so that other detectors, for example, a flood detector or door contact can be monitored. It has an ability to control external equipment, such as automatic door handles and electronic locks (with external power supply), PowerBox or other equipment.

Cabinet monitoring RAMOS mini

Package	Order code
1 pc	RAMOS Mini

Supply includes:

- 1x RAMOS Mini unit
- 1x temperature sensor RMS-ST-02
- 1x power source RMS-PW-05
- 1x straight and angle holder
- First run installation manual; Installation CD (RAMOS Setup)

CONTEG, spol. s r.o.**Headquarters:**

Na Vítězné pláni 1719/4

140 00 Prague 4

Czech Republic

Tel.: +420 261 219 182

Fax: +420 261 219 192

Production plant:

K Silu 2179

393 01 Pelhřimov

Czech Republic

Tel.: +420 565 300 300

Fax: +420 565 533 955

outteg@conteg.com

www.conteg.com

Local Branches/Offices

Austria / Germany /

Switzerland:

+420 724 723 184

Benelux:

+32 477 957 126

Eastern Europe:

+49 172 8484 346

Finland / Sweden / Baltics:

+358 50 414 1257

France / Italy / Maghreb:

+33 686 074 386

India:

+91 991 6950 773

Middle East:

+971 4445 2838

Russia / CIS:

+7 495 967 3840

Saudi Arabia:

+966 594 30 13 08

Ukraine:

+380 674 478 240

Although this catalog was prepared, produced and checked with the best care, Conteg, spol. s r.o. cannot accept any liability for omissions or errors in this publication. Due to the continuous development and progress, Conteg, spol. s r.o. also reserves the right to change details and technical specifications of the products shown in this catalogue. Such changes along with eventual errors or printing errata shall not constitute grounds for compensation.